

# My Sermon Notes

Name: .....

Date: .....

It is       today.

I heard:



## New Sermon Series

Sermon Series: The God Story  
Chapter 2: The Fall

## New Character Alert

The "Enemy" or in this story the "Serpent".  
Can you describe what the "enemies"  
character is like?

## Keyword

What does it mean to feel shame? Draw or write what it feels like below.

## Word Match!

Draw a line to match the word with the correct definition

Guilt is:

freely given love

Grace is:

feeling that you've done something bad

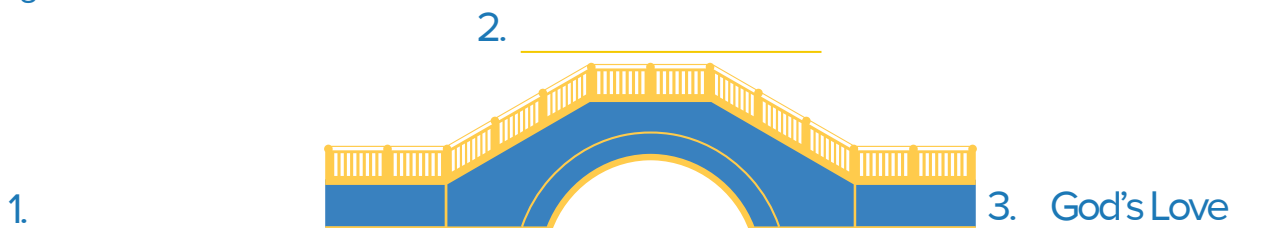
Blame is:

a way we deflect feeling bad about our mistakes

## Complete the diagram below

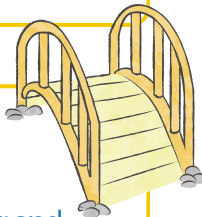
### Bridging the Gap

Our sin keeps us from a relationship with God. BUT God's grace is what allows us to cross the bridge over and over again into His embrace.



Hints:

1. What keeps us from a relationship with God?
2. What does God freely give us over and over again?

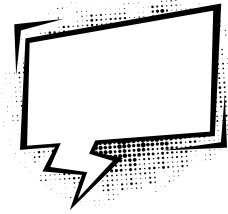


# Storyboard

Draw it! Complete this sermon's storyboard.

1. The Tree of Life

2. The Tree of the knowledge of good and evil



3. The crafty serpent

4. Adam and Eve eat from the Tree of the knowledge of good and evil

5. Adam and Eve feel shame and hide from God

6. The shame over their mistakes is too much to bear, so they avoid responsibility by putting the blame on others instead.

7. God shows them mercy and grace for their mistakes.